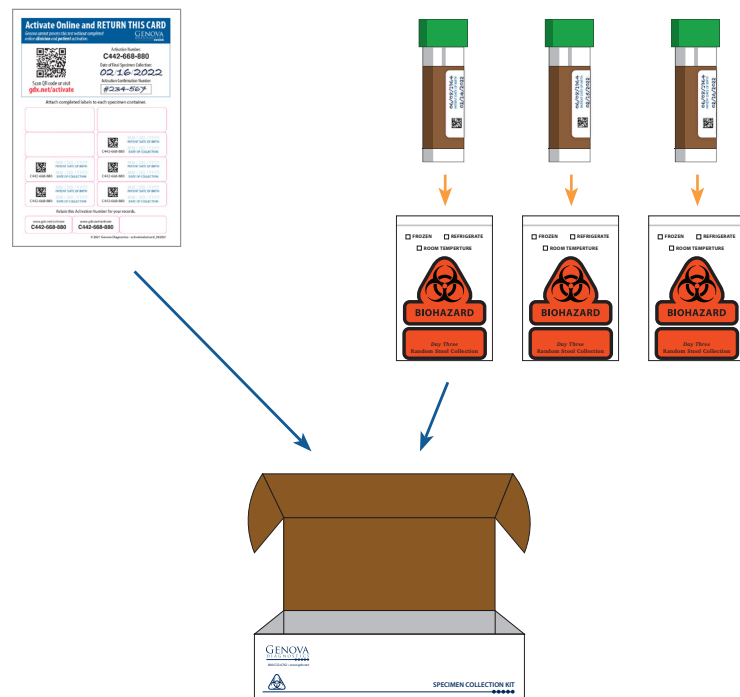


STEP 3

Return Collection Pack

1. Confirm that each tube has a **completed label attached** with **date of birth** and the **date of collection**. Place the **biohazard bags** with tubes inside the **collection box**.
2. Visit **gdx.net/activate** to enter the date of your collection and the stool consistency of the Day 3 sample. When complete you will receive a **confirmation code**. Write the date of final collection and your confirmation code on the **activation label card** and place inside the box with the biohazard bags.
3. Retain a copy of your activation number for future reference using one of the three labels provided on the bottom of the activation label card.
4. **Close the cardboard box** and place **inside the FedEx shipping bag**. Follow the shipping instructions provided.



Additional resources are available online.
Visit **gdx.net/activate** and enter your activation number.

©2022 Genova Diagnostics IS-479,g,pi,b-139-f,032014 rev 0222

Patient Guide



Parasitology #2302

Parasitology - Direct Exam #2316



Do not collect samples while experiencing active bleeding from hemorrhoids or menstruation.



Discuss any medications with your physician as they may impact results.

BEFORE YOU BEGIN

Activate This Test

Visit **gdx.net/activate** and enter the number found on the activation label card included with this collection pack.



STEP 1

Plan Your Collection

Use a calendar to plan your specimen collection. Ship Monday thru Friday and avoid US holidays which may cause delays.

4 Weeks Before Collection

Wait at least 4 weeks from colonoscopy or barium enema before beginning the test.

2-4 Weeks Before Collection

If taking antibiotics, antiparasitics, antifungals, or probiotic supplements (acidophilus, etc.), it is recommended that you wait a minimum of 14 days after your last dose before beginning the test; 28 days may be preferred after antibiotics have been utilized.

2 Days Before Collection

Unless directed otherwise by your physician, discontinue rectal suppositories, enemas, activated charcoal, bismuth, mineral oil, castor oil, and bentonite clay.

STEP 2

Specimen Collection

1. **Review** instructions and test prep information at gdx.net/activate.
2. Write your **date of birth** (DOB) and the **date of collection** on the labels provided. Attach a completed label to each of the **3 tubes**.

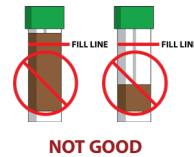
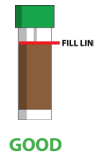
CAUTION: Tubes contain poisonous liquid. **KEEP OUT OF REACH OF CHILDREN.**

Tubes are under pressure. Cover tube cap with a cloth and remove cap slowly. In case of eye contact, flush with water for 15 minutes. In case of skin contact, wash with soap and water. In case of ingestion, contact poison control center immediately.

Do not overfill tubes. Make sure that the liquid and sample do not go over the fill line. Do not under fill tubes.

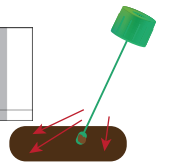
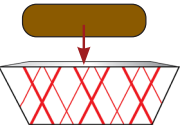
If you see a **worm**, **remove** it from the sample and **place** in a clean glass jar with rubbing alcohol. **Write** WORM on the jar and return with your specimens.

Collecting stool three days in a row is best, but not required.



Day 1

1. **Wear** the glove provided.
2. **Collect** your **stool sample** in the provided tray. **Do not** let urine or water from the toilet get into the sample.
3. **Transfer** stool sample into the **GREEN-TOP** tube using the built-in scoop. Collect from different areas of the sample. Add stool until contents reach the fill line on the tube.
4. **Mix** the sample with the liquid in the tube until it is as smooth as possible.
5. Screw the cap on tightly and **shake the tube** for 30 seconds.
6. **Place** the tube in the biohazard bag and **refrigerate** until ready to ship. Do not freeze.
7. **Dispose** of the remaining stool into the toilet then **throw away** the collection tray and glove.



Day 2

1. Follow the instructions for **Day 1** using a new **GREEN-TOP** tube.

Day 3

1. Follow the instructions for **Day 1** using a new **GREEN-TOP** tube.